

悼念梁偉材牧師

西方神學院 溫以諾教授

DIS 2014 @ WESTERN SEMINARY, PORTLAND, OR



**A Missiological Study of the
“Mission By and Beyond the Diaspora”
Among the Chinese Churches in Canada**

A Dissertation Submitted to

Dr. Enoch Wan

Western Seminary

Portland, Oregon

In Partial Fulfillment

For the Degree of Doctor of Intercultural Studies

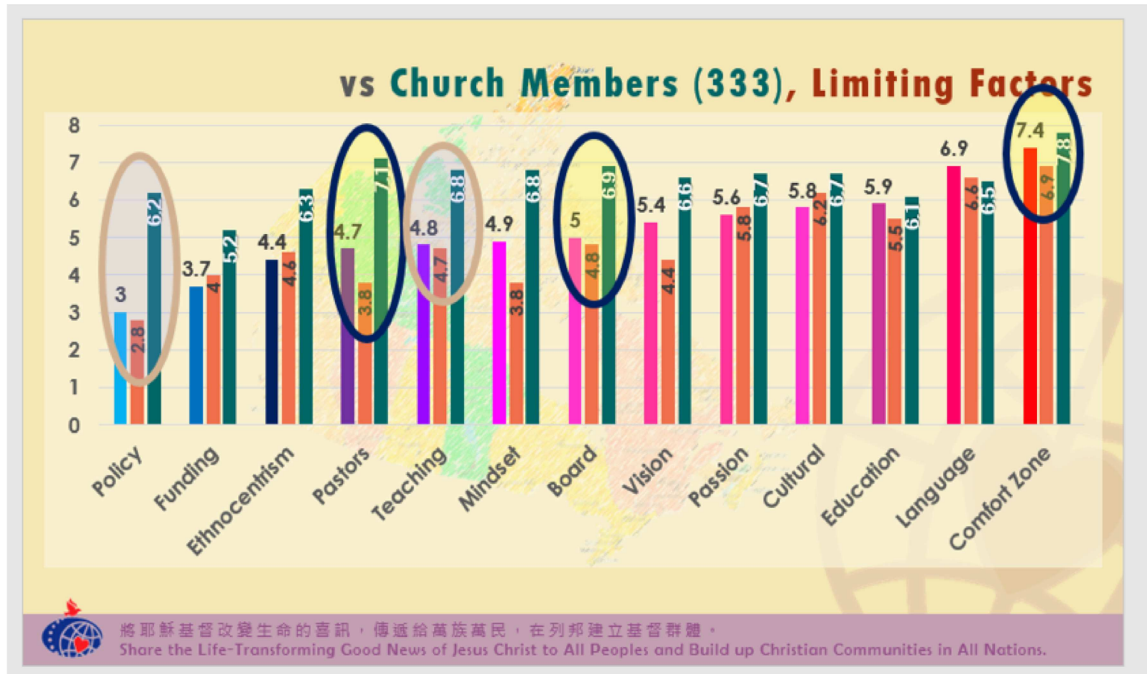
By

William Leung

December 25, 2021

加拿大華人教會跨文化事工

Category of these bars:				P10Q20												
1. Survey A - 47 churches (blue to red bars)				Limiting Factors												
2. 11 Alliance churches (subset of Category 1) - orange bars																
3. Survey B - 333 church members - green bars																
Response ID	Category of these bars	Age Bracket	Generation (1st vs. Canada born and raised)	Education	Funding	Vision and Mission	Pastoral leadership	Deacon/ Elders	Teaching of the church	The Great Commission Mindset	Mission policy	Chinese cultural factors	Language barrier	The congregation is not interested	Ethnocentrism	Comfort Zone
29	1	Nil	Nil	8	8	2	4	1	4	2	0		8	4	6	5
45	1	Nil	Nil	1	1	1	1	1	1	5	7	1	1	0		1
6	1	Nil	Nil	9	1	8	7	7	3	3	3	7	8	3	2	10
12	1	Nil	Nil	10	5	6	8	8	6	9	1	2	7	6	1	9
24	1	Nil	Nil	5	6	7	5	3	5	6	5	7	7	5	5	5
32	1	Nil	Nil	9		7	6	5	5	6	5	9	10	4	5	5
52	1	Nil	Nil	7	1	7	2	4	7	9	1	9	9	9	1	9
31	1	Nil	Nil	4		9	9	9	7		8	0		6	1	9
35	1	Nil	Nil	0	0	0	0	0	0	1	0	3	7	5	7	8
58	1	Nil	Nil	3	2	1	1	6	2	1	3	3	4	2	4	6
5	1	Nil	Nil	6	4	6	5	5	5	5	5	4	4	6	2	3
17	1	Nil	Nil	8	8	3	4	5	5	7	6	3	10	8	2	8
22	1	Nil	Nil	0	5	5				5	2					
26	1	Nil	Nil	5	2	2	2	2	2	2	2	1	1	2	1	5
47	1	Nil	Nil	9		9	2	2	5	2	2	8	8	9	6	8
48	1	Nil	Nil	4	3	5	2	5	5	2	2	7	7	7	1	8
39	1	Nil	Nil	8		1	6	8	8			9	8		6	9
40	1	Nil	Nil	1	2	1	0	2	1	2	1	5	4	3	6	6
41	1	Nil	Nil	8	0	5	8	8	5	2	2	9	9	5	5	5
49	1	Nil	Nil	5		4	0	2	2	2		7	6	5	8	8
50	1	Nil	Nil	7	8	7	9	9	9	9		9	9	7	9	9
25	1	Nil	Nil	5	5	9	0	3	5	0	0	5	9	5	0	8
27	1	Nil	Nil	8	0	7	5	8	9	8		5		9		7
57	1	Nil	Nil	7	1	7	7	7	4	2	2	8	8	3	3	7
30	1	Nil	Nil					0								
44	1	Nil	Nil	10	5	7	7	7	6	7	5	6	9	8	6	10
15	1	Nil	Nil	7		5	5	5	3	7		7	8			8
54	1	Nil	Nil	10	5	10	8	7	8	10	5	10	8	8	3	10
9	1	Nil	Nil			10	10	10	10	10		10		10	10	10
43	1	Nil	Nil	4		5	5	5	7			7	2	8	5	8
47	1	Nil	Nil	8	9	9	9	9	3	7		2	8	5	9	10
14	1	Nil	Nil													



For this, I plan to do an **MANOVA**, it's **post hoc**, and an **ANOVA with contrast** with the data. So please prepare the data in the following format (in excel):

For this, I plan to do an **MANOVA**, it's **post hoc**, and an **ANOVA with contrast** with the data. So please prepare the data in the following format (in excel):

ID	Category of these bars	Generation (1 st vs. Canada born and raise)	Factor 1	F2	F3	F4	F5	F6	F7	F8	F9	F10	F11	F12	F13

MANOVA is to spot whether there is significant difference among the three categories, and then **the corresponding post hoc is to spot those factors with significant difference**. Finally, **the ANOVA with contrast is to find out where the difference is (among which categories) within the selected factors from post hoc**.

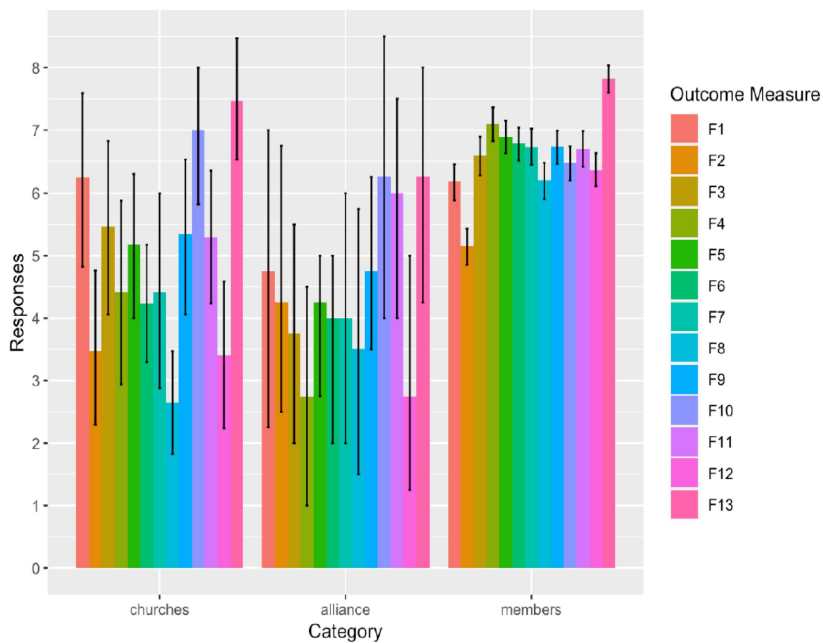
I plan to run these test regarding generations as well, and see if there is significant difference **among generations** with these factors.

Please do clean the data (include only the valid numerical data I need in a chart formatted as shown above) first, and send it to me in one excel file.

Let's just begin with these. Hope it helps. Thanks.

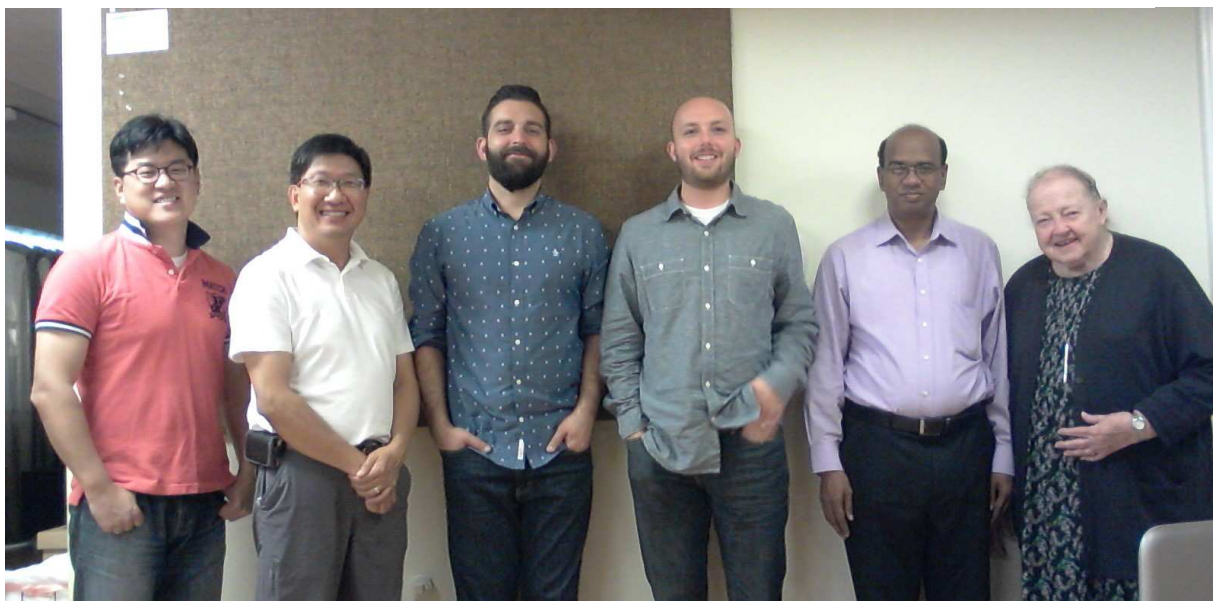
Noel

```
= "errorbar", position = position_dodge(width = 0.90), width = 0.2) + labs(x = "Category", y = "Responses", fill = "Outcome Measure") + scale_y_continuous(breaks = seq(0, 10, by = 1))
```



```
by(Data_numeric, Data$Category, cov)
```

加拿大華人教會跨文化事工



History of Missions class DIS Western Seminary 2014



Western Seminary 2017



Western Seminary 2017



Dinner at Wan's home 2017 Western Seminary

